



HOMES

Salt Water
AT CHESIL VIEW

THE PENTHOUSE APARTMENT

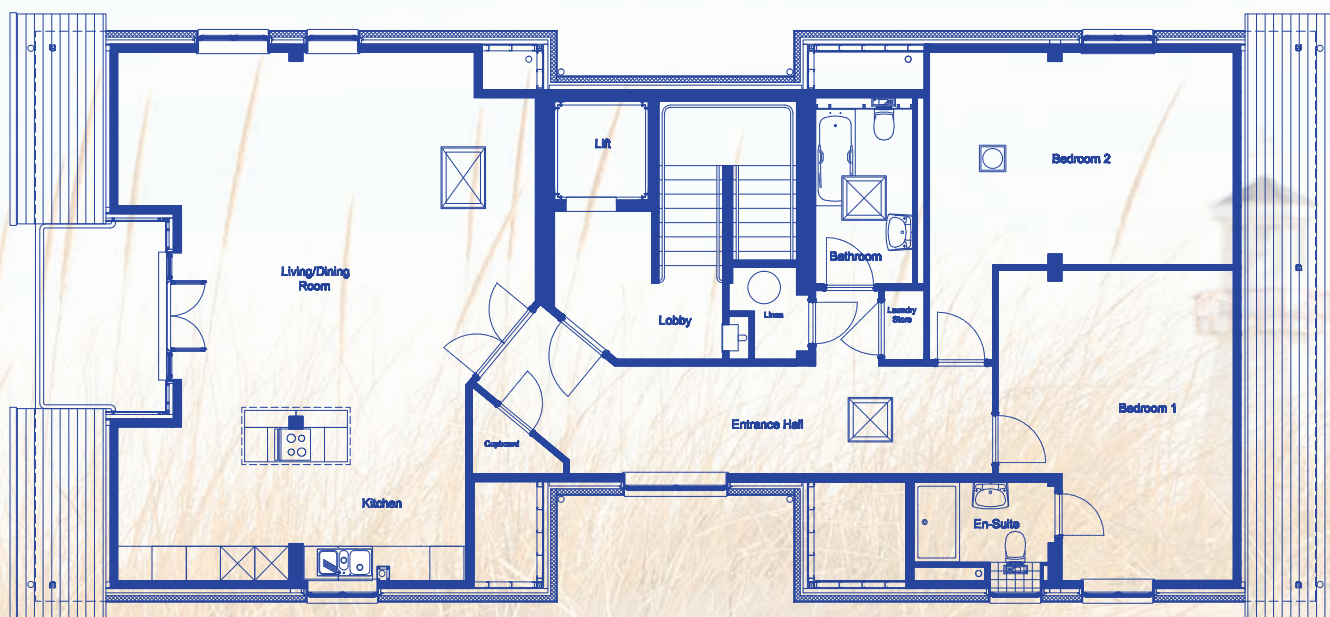


SALTWATER AT CHESIL VIEW IS A SELECT DEVELOPMENT OF 4 LUXURY APARTMENTS AND A PENTHOUSE SITUATED IN ITS OWN LANDSCAPED GROUNDS BENEFITING FROM PARKING FOR BOTH YOU AND YOUR VISITORS.

The development is in an elevated position with far reaching views to the south. Weymouth town centre is just a mile away and due to the position, the development benefits from excellent transport links.

Weymouth itself has a bustling town centre along with fantastic beaches and a vibrant harbour.

1 PENTHOUSE | 2 APARTMENTS WITH SEA VIEWS | 2 APARTMENTS WITH GARDEN VIEWS



PENTHOUSE – CONTEMPORARY STYLE 2 LUXURY BEDROOMS

- Master bedroom with en-suite
- Spacious second bedroom
- Open plan living, dining and kitchen area
- Fully fitted kitchen
- Family bathroom
- European style laundry cupboard
- Balcony with views to the south

Modern contemporary design for spacious living.

DIRECTIONS

From Dorchester head south on the A354 towards Weymouth for approximately 8 miles. Once in Weymouth pass through four roundabouts remaining on the A354. Chesil View is situated approximately 1 ½ miles further along on the left hand side. The development is set back from the road and is accessible via its very own private driveway.



Connells, 84 St Thomas Street, Weymouth, Dorset, DT4 8EN
Telephone: 01305 770 333