

Lodja Specification

General Lodja Specifications

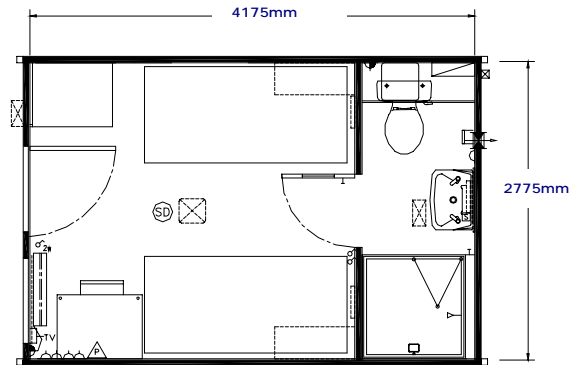
- 4175mm x 2775mm spacious floor area
- Internal ceiling height 2300mm for plenty of headroom
- Fully ventilated bathroom with extractor fan
- Stylish 2kW Oil filled radiator with 24 hour timer and thermostat
- Television Point
- Mirror light with shaving point
- Vinyl safety flooring with sit on coving to bathroom
- Cold rolled, galvanised steel riveted floor frame fully insulated
- Single point connection for all external service inlets and outlets
- Adjustable corner support legs with integral top lift facility



Unique Lodja 2 Person Sleep Specifications

- Built-in natural beech finish combi wardrobe with shelves
- Two built-in natural beech finish lockable wall-mounted locker units
- Two full size (6'3" x 3') metal frame single beds with flame retardant mattress
- Individual bedhead lights
- Built-in desk / table
- Full size wash hand basin and shower suite with temperature control
- Large capacity water storage heater

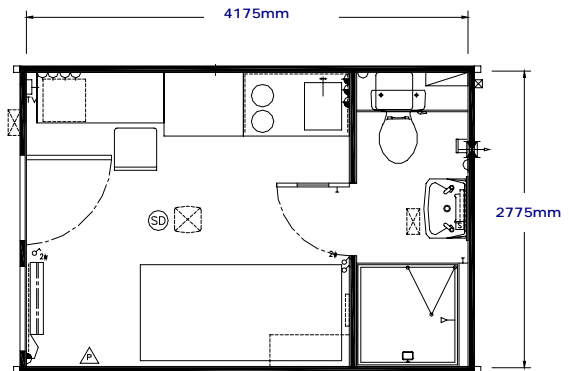
Lodja 2 Person Sleep Unit – Plan View



Unique Lodja 1 Person Sleep / Living Specifications

- Mini kitchen with stainless steel sink top, draining board and chrome mixer tap
- Two built in hotplates with splash back
- Refrigerator and steel cupboard unit
- Built-in natural beech finish combi wardrobe with shelves
- One built-in natural beech finish lockable wall-mounted locker units
- One full size (6'3" x 3') metal frame single bed with flame retardant mattress
- Individual bedhead light
- Built-in desk / table
- Full size wash hand basin and shower suite with temperature control
- Large capacity water storage heater

Lodja 1 Person Sleep / Living Unit – Plan View



Lodja Security

- Robust, steel wall cladding to exterior
- High security steel-clad external door, with stainless steel hinges and dog bolt, Europrofile lock with internal turn snib.
- Pyroshield double glazed window
- External Bulkhead light with PIR
- Mains smoke detector with battery backup
- Dry Powder Fire Extinguisher

Lodja Low Maintenance

- Easy-clean vinyl wrapped plasterboard internal walls and ceiling finishes
- Easy to clean finishes on internal surfaces and fittings External Bulkhead light with PIR
- Internal door architraves easy clean white UPVC Mains smoke detector with battery backup
- All key service items located in a central, concealed services cupboard in bathroom

Warranty and Service

- General 12 months parts and labour guarantee
- Rollalong can deliver and install Lodja units

